

SY365H

PRODUCT SPECIFICATIONS

HYDRAULIC EXCAVATOR



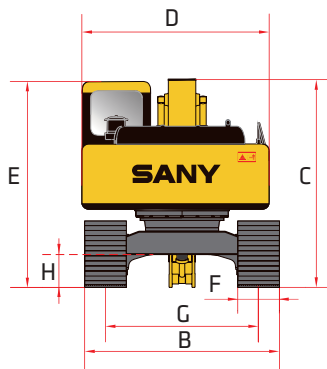
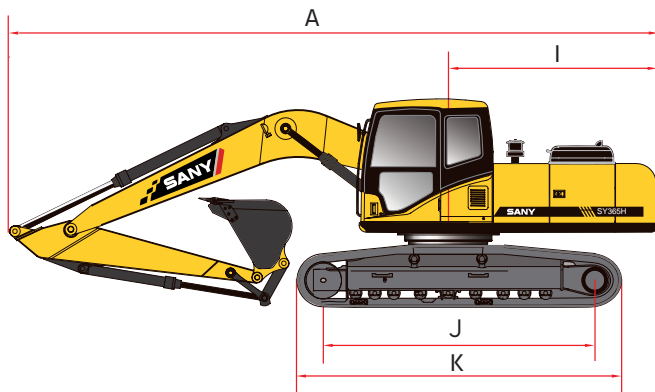
STANDARD FEATURES

- Powerful, robust and reliable powertrain and hydraulic components for long life in the most demanding applications
- Optimized DOMCS control hydraulics improve operating efficiency by up to 5% and fuel efficiency by up to 10%
- The heavy-duty undercarriage, equipped with a triple chain guard and double bearing top rollers as standard, provides stability in any situation.
- Selectable working modes match machine performance to the application, maximizing productivity and minimizing operating costs

- ➔ **Gross Power**
231.0 kW / 314 HP
- ➔ **Dig Depth**
7337 mm / 24'
- ➔ **Operating Weight**
39000 kg / 85,980 lb
- ➔ **Bucket Breakout**
235.0 kN / 52,875 lbf

SY365H || PRODUCT SPECIFICATIONS

DIMENSIONS



DIMENSIONS

Boom Length	6500 mm	21' 4"
Stick (Arm) Length	3200 mm	10' 6"
A Transport Length	11137 mm	36' 6"
B Transport Width		
600mm shoes (NLC)	2990 mm	9' 9"
600mm shoes (LC)	3190 mm	11' 1"
C Transport Height	3755 mm	12' 3"
D Upper Structure Width	2986 mm	9' 9"
E Cab Height	3490 mm	11' 5"
F Track Width (standard shoe)	600 mm	1' 11"
G Track Gauge		
NLC	2390 mm	7' 10"
LC	2590 mm	8' 6"
H Ground Clearance	550 mm	22"
I Tailswing Radius	3461 mm	11' 4"
J Track Length on Ground	4140 mm	13' 7"
K Track Length	5068 mm	16' 7"

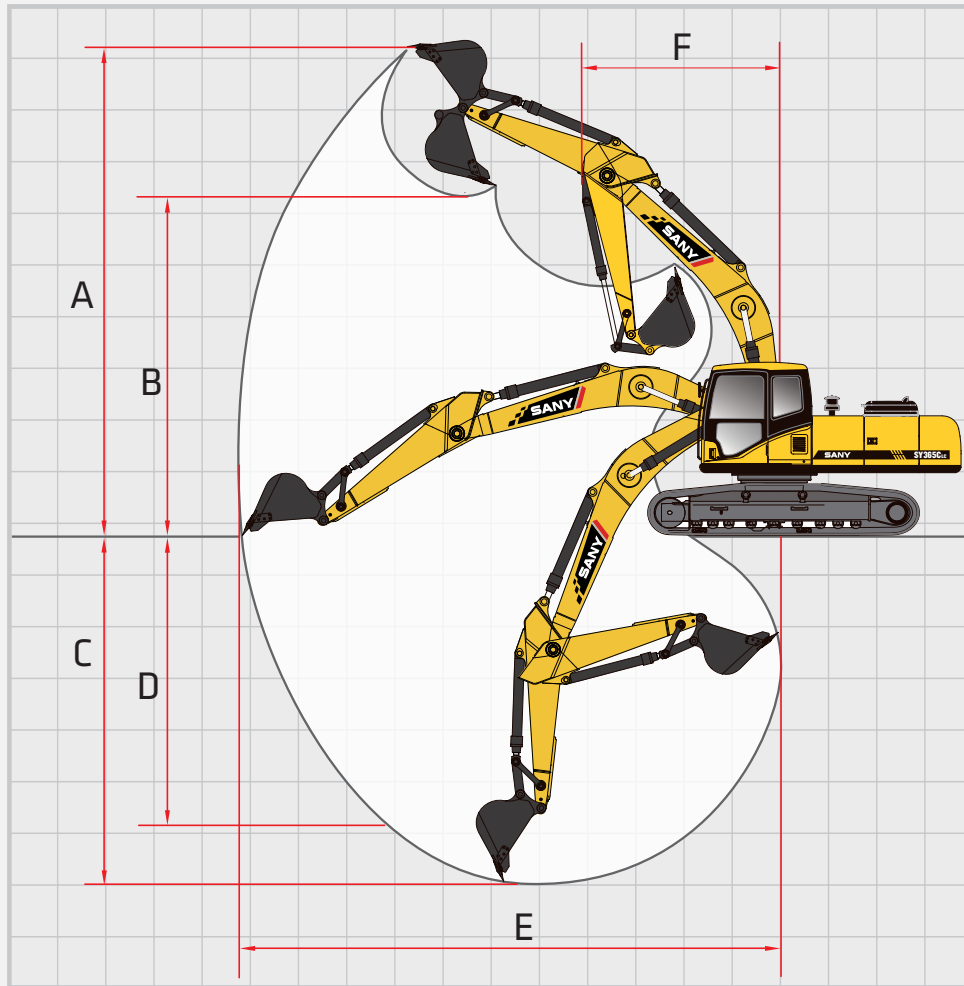
Powerful, robust and reliable powertrain and hydraulic components

TECHNICAL SPECIFICATIONS

Operating Weight	39000 kg	85,980 lb
Ground Pressure	68.0 kPa	9.86 psi
Engine	Cummins QSL9 Stage V	
Displacement	8.9 L	543.1 in ³
Gross Power	231 kW	314 HP
Hydraulics	Negative Flow Control with Pilot Control	
Main Hydraulic Pump	Axial Piston - Variable Displacement	
Operating Flow (maximum)	720.0 L/min	158 gal/min
Operating Pressure (maximum)	34.3 MPa	4975 psi
Power Boost Pressure (maximum)	37.3 MPa	5410 psi
Travel Motor	Axial Piston with Park Brake	
Travel Pressure (maximum)	34.3 MPa	4975 psi
Travel Speeds (maximum)	3.0 / 5.0 km/hr	2.1 / 3.2 mph
Travel Effort (maximum)	320.0 kN	71,938 lbf
Grade Capability (maximum)	35°	
Swing Motor	Axial Piston with Swing Brake	
Swing Pressure (maximum)	27.5 MPa	3989 psi
Swing Speed (maximum)	8.8 RPM	
Undercarriage (standard)	Steel Track	
Track Shoe width (standard)	600 mm	1' 11"
Track Rollers (per side)	9	
Carrier Rollers (per side)	2	

SERVICE REFILL CAPACITIES

Fuel Tank Capacity	600.0 L	132.0 gal
DEF Tank Capacity	85.0 L	19.0 gal
Hydraulic Tank Capacity	460.0 L	101.0 gal
Engine Oil Capacity	21.0 L	4.6 gal
Cooling System Capacity	36.0 L	7.9 gal



WORKING RANGE

Boom Length	6500 mm	21' 4"
Stick (Arm) Length	3200 mm	10' 6"
A Maximum Digging Height	10723 mm	35' 2"
B Maximum Dumping Height	7396 mm	24' 3"
C Maximum Digging Depth	7337 mm	24' 0"
D Maximum Vertical Wall Digging Depth	6480 mm	21' 3"
E Maximum Reach at Ground Level	10831 mm	35' 6"
F Minimum Swing Radius	4178 mm	13' 8"

DIGGING PERFORMANCE

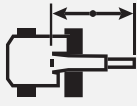
Boom Length	6500 mm	21' 4"
Stick (Arm) Length	3200 mm	10' 6"
Bucket Breakout Force (ISO)	235.0 kN	52,875 lbf
Stick (Arm) Digging Force (ISO)	170.0 kN	38,217 lbf

SY365H || LIFTING PERFORMANCE

Standard 6500 mm (21' 4") Boom
 Standard 3200 mm (10' 6") Arm
 Standard 600 mm (23.6") Track Shoes
 No Bucket

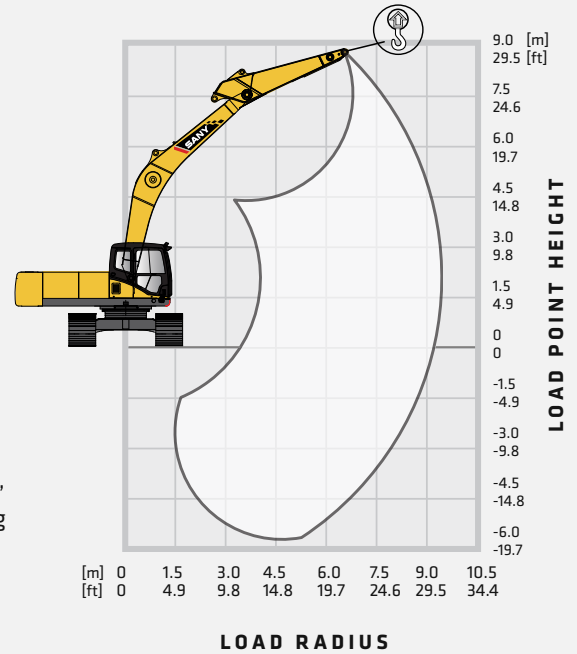


FRONT



SIDE

Ratings are based on ISO 10567:2007.
 Lift capacity does not exceed 75% of tipping load with the machine on firm, level ground or 87% of hydraulic lifting capacity.



LOAD RADIUS	3.0 m 9.8 ft		4.5 m 14.8 ft		6.0 m 19.7 ft		7.5 m 24.6 ft		9.0 m 29.5 ft		MAX REACH	
LOAD POINT HEIGHT												
7.5 m 24.6 ft							8541 kg* 18,829 lb*	8541 kg* 18,829 lb*			8230 kg* 18,144 lb*	8230 kg* 18,144 lb*
6.0 m 19.7 ft							8695 kg* 19,169 lb*	8695 kg* 19,169 lb*			7995 kg* 17,626 lb*	7517 kg 16,572 lb
4.5 m 14.8 ft			13517 kg* 29,799 lb*	13517 kg* 29,799 lb*	10735 kg* 23,666 lb*	10735 kg* 23,666 lb*	9303 kg* 20,509 lb*	9303 kg* 20,509 lb*	8530 kg* 18,805 lb*	6306 kg 13,902 lb	7897 kg* 17,626 lb*	6747 kg 14,875 lb
3.0 m 9.8 ft			16760 kg* 36,949 lb*	16760 kg* 36,949 lb*	12265 kg* 27,039 lb*	12265 kg* 27,039 lb*	10082 kg* 22,227 lb*	8020 kg 17,681 lb	8841 kg* 19,491 lb*	6171 kg 13,604 lb	7850 kg* 17,306 lb*	6354 kg 14,008 lb
1.5 m 4.9 ft			18866 kg* 41,592 lb*	15501 kg* 34,173 lb*	13528 kg* 29,824 lb*	10447 kg 23,031 lb	10782 kg* 23,770 lb*	7736 kg 17,054 lb	9141 kg 20,152 lb	6029 kg 13,291 lb	7713 kg* 17,004 lb*	6230 kg 13,735 lb
0 m 0 ft			19303 kg* 42,555 lb*	15139 kg* 33,375 lb*	14159 kg* 31,215 lb*	10131 kg 22,335 lb	11172 kg 24,630 lb	7537 kg 16,616 lb	9210 kg 20,304 lb	5934 kg 13,082 lb	7887 kg* 17,388 lb*	6356 kg 14,013 lb
-1.5 m -4.9 ft	14807 kg* 32,643 lb*	14807 kg* 32,643 lb*	18593 kg* 40,990 lb*	15103 kg* 33,296 lb*	14025 kg* 30,919 lb*	10016 kg 22081 lb	11046 kg 24,352 lb	7456 kg 16,437 lb			7927 kg* 17,476 lb*	6785 kg 14,958 lb
-3.0 m -9.8 ft	22442 kg* 49,476 lb*	22442 kg* 49,476 lb*	14325 kg* 31,581 lb*	14325 kg* 31,581 lb*	13001 kg* 28,662 lb*	10079 kg 22,220 lb	10064 kg* 22,187 lb*	7524 kg 16,587 lb			7766 kg* 17,121 lb*	7711 kg 17,000 lb
-4.5 m -14.8 ft	17806 kg* 39,255 lb*	17806 kg* 39,255 lb*	16893 kg* 37,242 lb*	16893 kg* 37,242 lb*	10562 kg* 23,285 lb*	10562 kg* 23,285 lb*					7176 kg* 15,820 lb*	7176 kg* 15,820 lb*

* Indicates load limited by hydraulic lifting capacity

SY365H | STANDARD AND OPTIONAL EQUIPMENT

OPERATORS COMFORT / CABIN

Automatic air conditioning	●
Radio and speaker	●
Armrests (adjustable)	●
12V outlets	●
USB port (music)	●
Heated air suspension seat	●
Sky light	●
Integrated cool box	●
10-inch touch display	●
ROPS/FOPS cabin with front protection	●
Rubber floor	●

WORKING EQUIPMENT

Boom and arm hose burst check valves	●
Double acting circuit for hydraulic quick coupler with piping	●
Breaker&Shear line proportional on Joystick with piping	●
Rotation line on Joystick with piping	●
Rotation line proportional on Joystick with piping	●
Flow adjustment for attachments	●
Pressure adjustment for attachments	●
Ram protection on both sides of the upper structure	●

UNDERCARRIAGE

Steel tracks 600	●
Steel tracks 700	○
Steel tracks 800	○
Holes/loops for fixing	●

OTHER EQUIPMENT

Fuel refilling pump	●
SAE/BHL pattern change valve	○
One-touch power boost	●
Overload alarm	●

WORKING LIGHTS

Lights – front (LED)	●
Lights – boom (LED)	●
Lights – platform (LED)	●
Lights – Rear (LED)	●

ENGINE/ENGINE COMPARTMENT

Auto idle	●
EU Stage V certified	●
DOC+DPF+SCR	●
Duel-stage fuel filtration	●

HYDRAULIC SYSTEM

Swing brake	●
2 speed travel	●
Piping for additional hydraulic function AUX 1	●
Piping for additional hydraulic function AUX 2	●
Hydra Pre-pressure operating joysticks	●
Selectable working modes	●

SAFETY

Battery master switch	●
Travel Alarm	●
Warning beacon	●
Rear camera	●
Camera on right side	●
Handrails	●
Lockable hoods	●
Lockable fuel cap	●

- Standard equipment
- Optional equipment

The standard and special options differ depending on the country in which the crawler excavator is delivered. If you have any questions, please contact your dealer directly for those items you may require. Materials and specifications are subject to change without notice.